

STORM SERIES

YNS550V SPECIFICATIONS 550kVA



Australian Design.
Powered by



GENERAL

| | |
|------------------------|---------|
| Model | YNS550V |
| Power Type | Diesel |
| Prime Power (kW/kVA) | 400/500 |
| Standby Power (kW/kVA) | 440/550 |

ENGINE

| | |
|------------------------------|-----------------------------------------------------|
| Engine Make and Model | VOLVO TAD1641GE |
| Engine Type | Turbo-charged, Low temp after-cooled, In-line, 6cyl |
| Fuel Consumption (L/h)* | 100.6 |
| Aspiration | Turbo-charged, Air-to-air charge cooled |
| Bore (mm) x Stroke (mm) | 144 x 165 |
| No. of Cylinders | 6 |
| Displacement (L) | 16.12 |
| Compression Ratio | 16.5:1 |
| Governor Type | EMS2 |
| Lubricating Oil Capacity (L) | 48 |

*Fuel Consumption is based on 100% load

ALTERNATOR

| | |
|---------------------|----------|
| Model | SLG354D1 |
| Frequency (Hz) | 50 |
| Rate Power (kW/kVA) | 400/500 |
| Power Factor | 0.8 |
| Exciter Type | PMG |
| Voltage Regulator | AVR |
| Voltage Regulation | +0.5% |
| No. of Phases | 3 |
| Insulation | Class H |
| Protection | IP 21 |
| Altitude (m) | 1000 |

UNIT

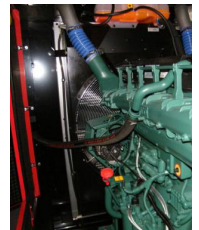
| | |
|--------------------------|------------------|
| Dimensions L x W x H (m) | 4.8 x 1.7 x 2.27 |
| Dry Weight (kg) | 5100 |
| Sound at 7m/dB | 83 |

STANDARD FEATURES

- 50°C rated radiator
- Powder coated finish
- All moving parts fitted with safety guards
- Emergency E stop
- State of the art control system
- ATS available

ASSEMBLY

The engine and alternator are closed coupled by means of an SAE flange. A full torsional analysis has been carried out to guarantee no harmful vibration will occur. Anti-vibration pads are affixed between engine alternator feet and base frame. Rubber diagonal isolators are specifically designed to reduce engine and alternator vibration and prevent distortion in the voltage and harmonic output of the generator. All iron and steel surfaces of the canopy fabrication have been sand blasted and then powder coated, which provides an excellent corrosion resistant surface.



CONTROL SYSTEM

Automatic stop/start, Data measurement, Alarm protection and remote control, remote measuring and remote communication; SG485 module must be fitted in. LCD display and it is easy and reliable to use.



QUALITY STANDARDS

Our generator sets are compliant with all the main standards, such as ISO8528, ISO14000, GB755, BS5000, VDE0530, ISO3046, IEC34-1, AS3000.

WARRANTY POLICY

12 months, 1200 hours as per generator.
Generators Australia Pty Ltd Warranty Policy.
All photos are for marketing purposes only.